

**YORK SUBURBAN SCHOOL DISTRICT**

# **PAYS Data 2023**

**Miranda Jenkins, MSW, LSW  
School Social Worker**

**June 24, 2024**

*Inspiring a BOLD Future*





# Brienna Derr

## Middle School Social Worker





# Tera Hanson

## Primary School Social Worker (K-5)





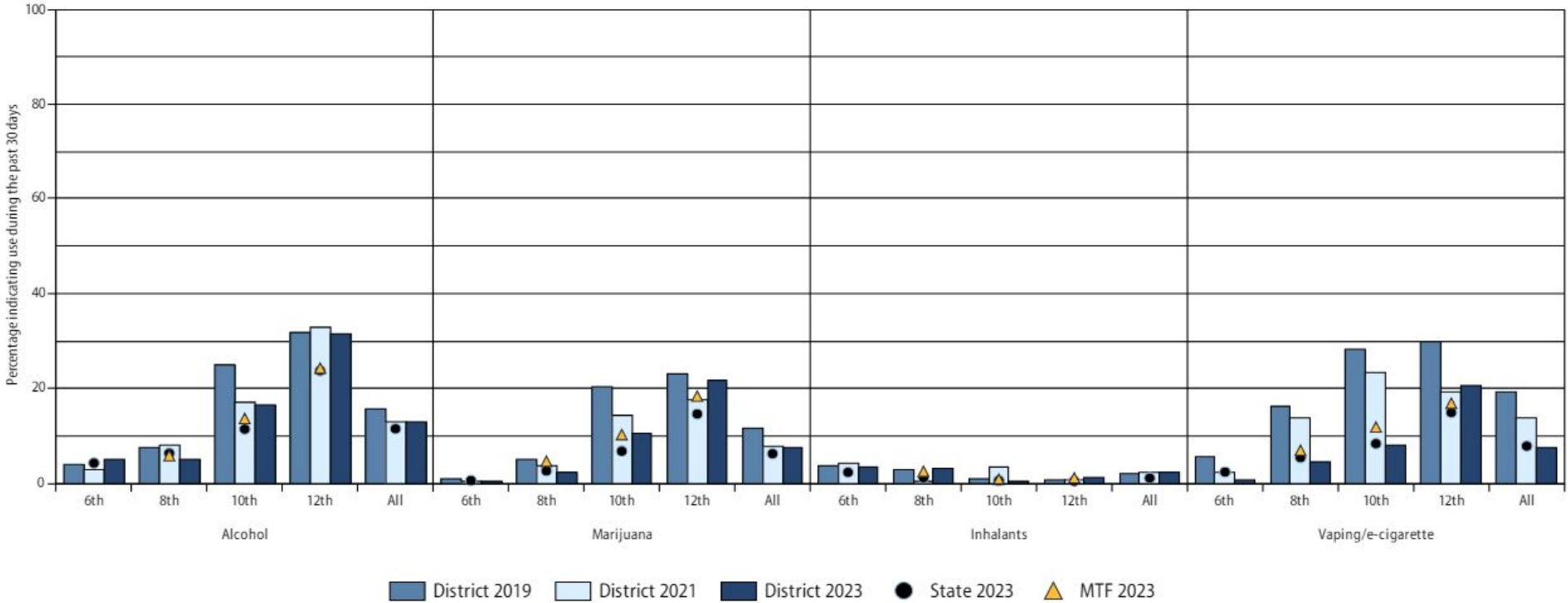
# What is the PAYS Survey?

- Pennsylvania Youth Survey (PAYS) was conducted in the fall
- Started in 1989; Biennial survey of youth in 6th, 8th, 10th, 12th grade
- Free to districts to participate
- PAYS is the primary tool in PA's prevention approach using data to drive decision making.
- 2023 - 262,535 total surveys completed in the state
- Validity - marker in survey to ensure accurate results.
  - 813 out of 823 submitted
- Substance use, mental health, community and school climate and safety,
- NEW this year - pilot 4th grade survey



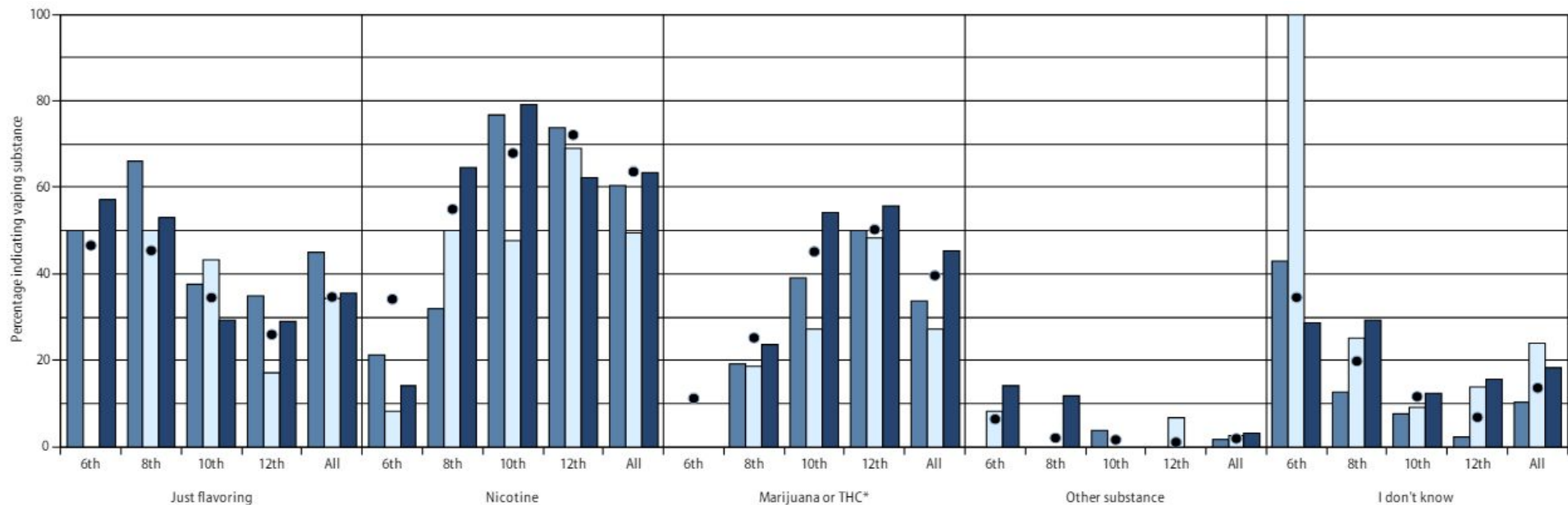
# Substance Use

## Alcohol, Marijuana, Inhalants, Vaping/E-Cigarettes





# Vaping

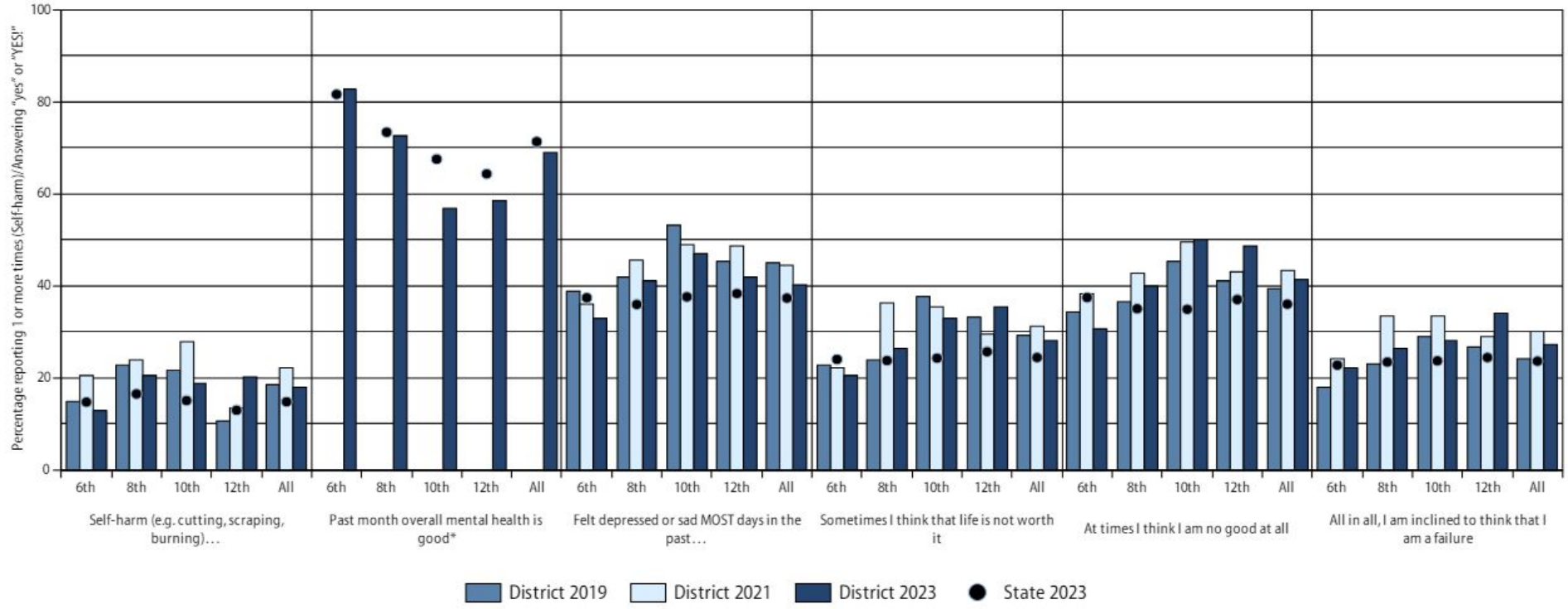


(Reported by students indicating electronic vapor product use in the past year)

District 2019    District 2021    District 2023    ● State 2023

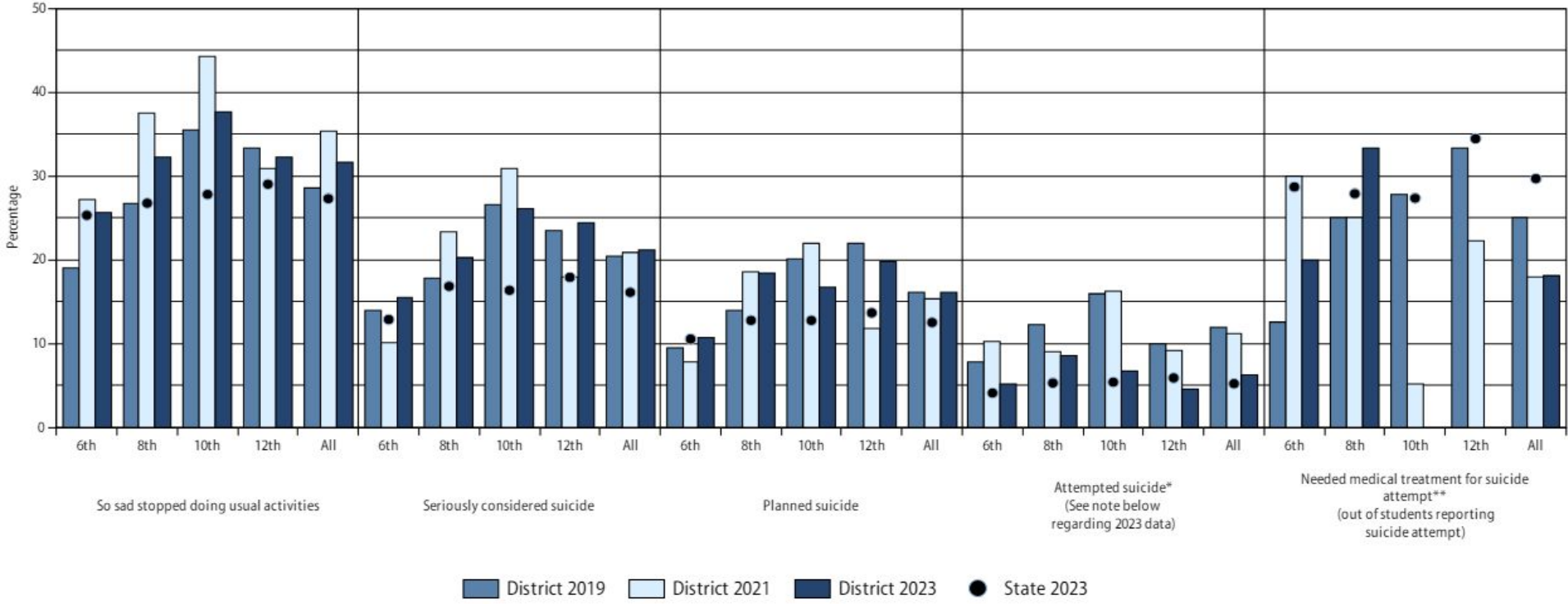


# Mental Health Concerns





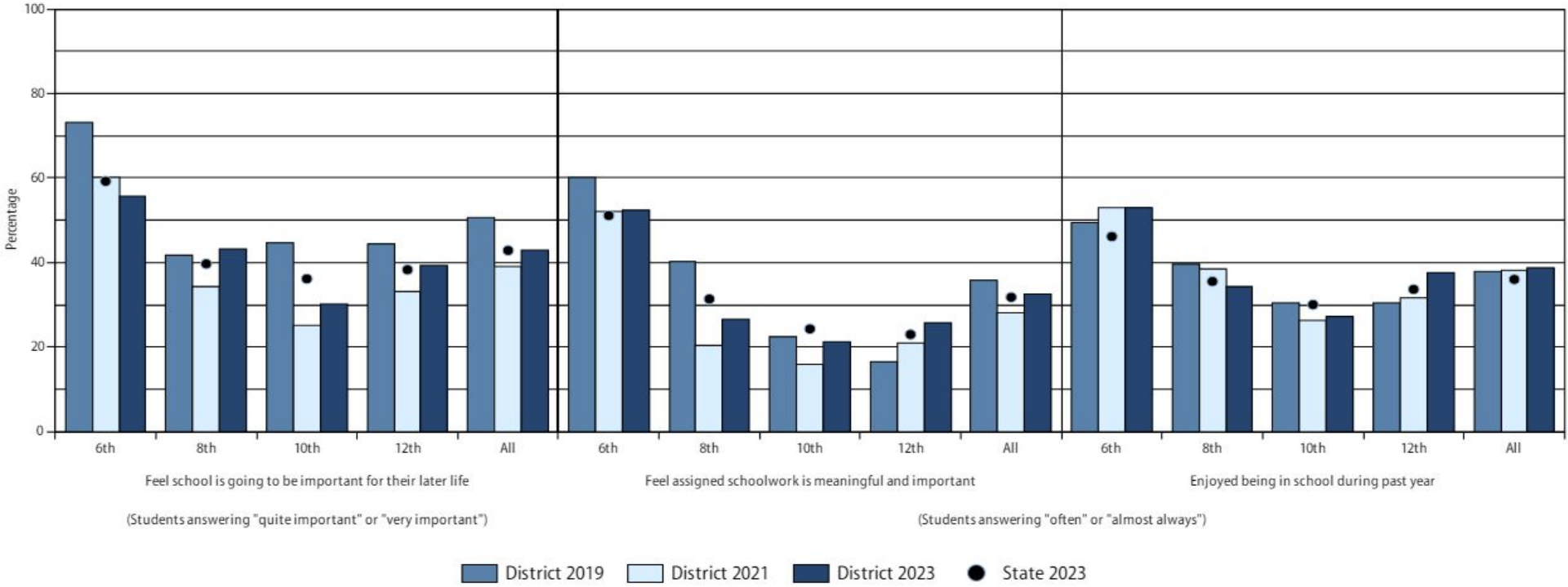
# Suicide Risk





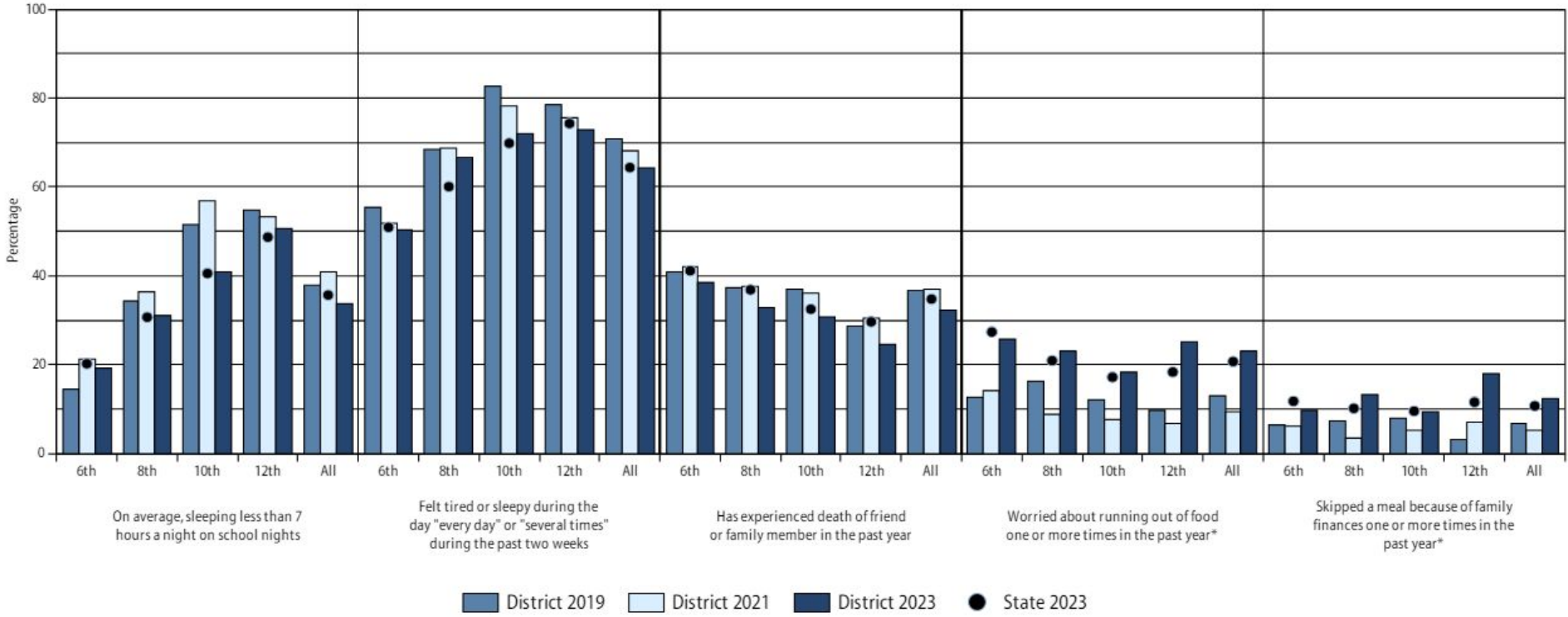


# School Climate/Community





# Sleep, Grief, and Food Insecurity



■ District 2019   
 ■ District 2021   
 ■ District 2023   
 ● State 2023



## Risk Factors

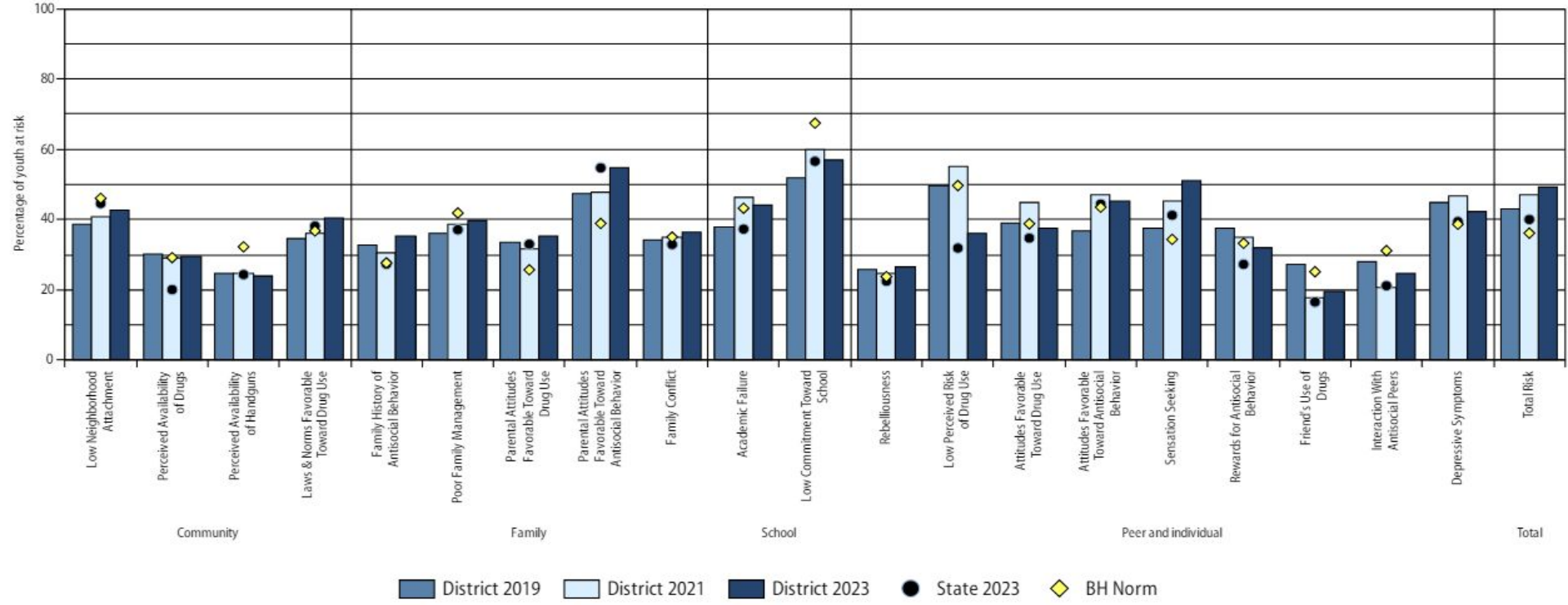
- Poor family management
- Family conflict
- Academic Failure
- Low commitment to school
- School connectedness
- Low perceived risk of drug use
- Peer drug use
- Antisocial behaviors

## Protective Factors

- Prevention programs
- Rewards for prosocial involvement
- Opportunities for positive social interactions
- Positive teacher/student relationships
- Positive peer interactions
- Robust support services

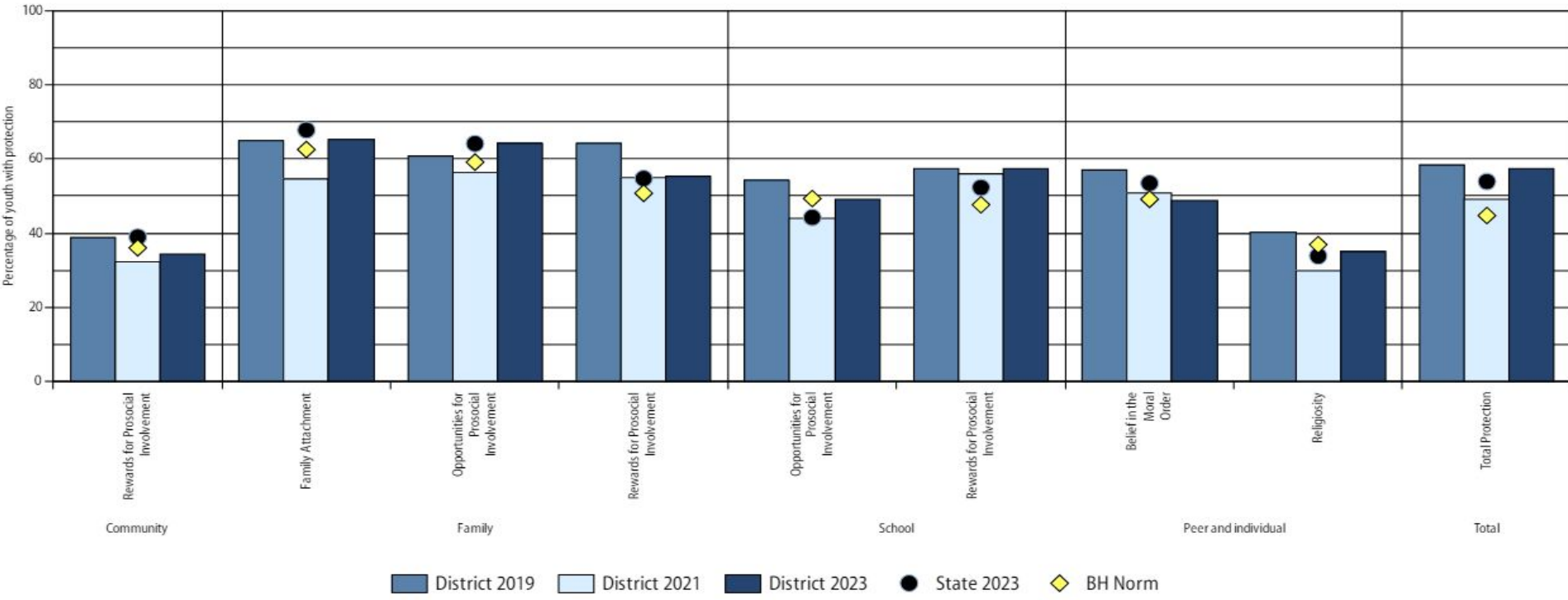


# Risk Factors (All Grades)





# Protective Factors (All Grades)





# What are we doing with the data?

- **Substance Use Prevention Programs**
  - Indepth; Byrnes Center; educational speakers; PA Department of Drug and Alcohol Programs(DDAP); PA Commission on Crime and Delinquency (PCCD)
- **Mental Health Support**
  - Social workers; Hope Squad; Little Aavidum; social emotional learning programs; SAP services; community mental health collaborations
- **School Climate/Connection**
  - Multi-tiered Systems of Support (MTSS); Restorative Practices (RP); Positive Behavioral Interventions and Supports (PBIS); clubs; sports; music; arts; field trips; school sponsored events



**“School district should be  
the wheel, but not the  
spoke, rim, and tire to fix  
everything”**